

You can bring 3rd exam test
connections to your final on
separate paper with a copy
of your exam. up to 10 points
possible

| | |
|----------------------|----|
| <u>total correct</u> | 10 |
| total wrong | |

Final Thur Dec. 15, 2011
10-12:30 RM 304M

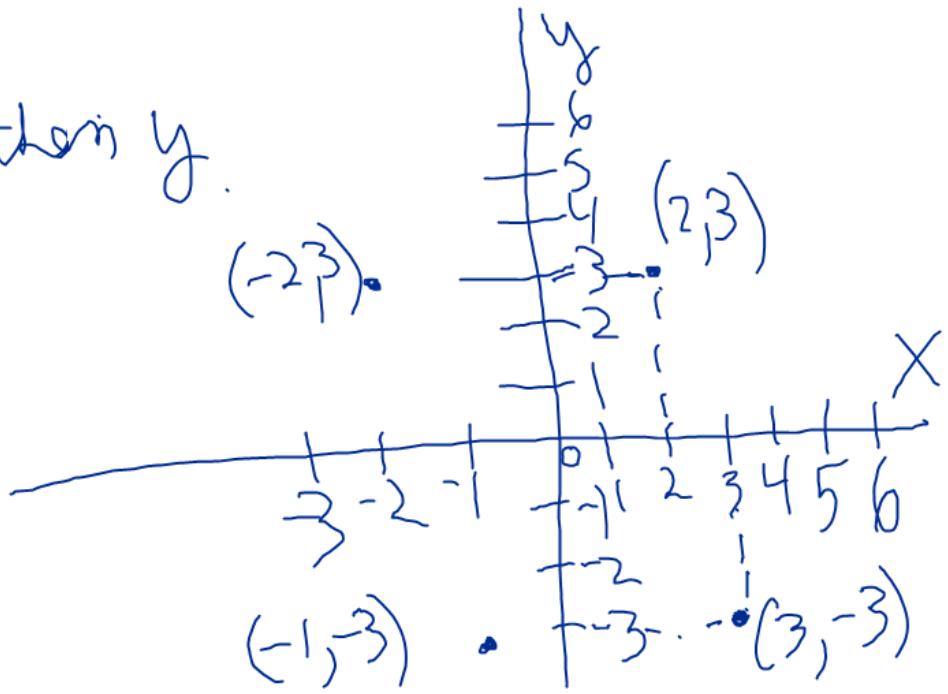
Q. 558 left

$AX + BY = C$ is always graphed
as a straight line

$$2X + 3y = 6$$

graph x then y .

plotting
points.



Graph $2x + 3y = 6$

Have to find 2 points.

You can let x or y be any number & find the other variable, but 0 is the easiest number in the world to work with.

let $x = 0$

$$2(0) + 3y = 6$$

$$0 + 3y = \frac{6}{3}$$

$$y = 2$$

$(0, 2)$

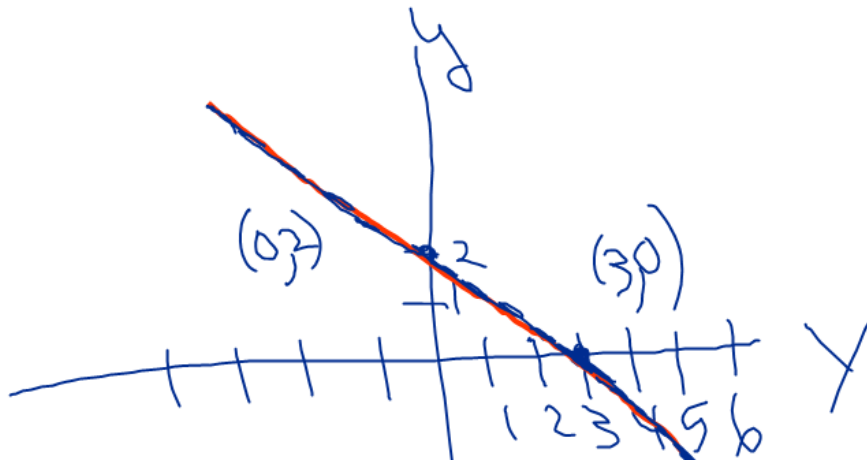
let $y = 0$

$$2x + 3(0) = 6$$

$$\frac{2x + 0}{2} = \frac{6}{2}$$

$$x = 3$$

$(3, 0)$



put a line through the 2 points
+ extend line beyond the points

Q.471

Key.

of means multiplication
is means equals
What means the unknown, X

basic factor 2.4 times 80 = 192

1. What number is 240% of 80

$$X = (2.40)(80) \quad \begin{array}{l} 240\% = 2.40 \\ 50\% = .50 \end{array}$$

$X = 192$ *192 is the number.*

2. 192 is what percent of 80.

$$\frac{192}{80} = \frac{X(80)}{80}$$

$$80X = 192$$

$$X = 2.40 = 240\%$$

3. 192 is 240% of what number *240% is the percent.*

$$\frac{192}{2.4} = \frac{(2.40)(X)}{2.4}$$

$$X = 80$$

80 is the number